



PROFESSIONAL

SPORT

HÄNDLER

KUNDENSERVICE

DOWNLOADS



VERTIKALE AKTIVITÄTEN

BELEUCHTUNG

TECHNISCHE RATSCHLÄGE

GEMEINSCHAFT

SICHERHEITSWARNUNGEN

Sicherheitswarnungen

Sicherheitswarnungen: Aufruf zur Kontrolle der GRILLON

Suche

SICHERHEITSWARNUNGEN: AUFRUF ZUR KONTROLLE DER GRILLON

Petzl requests the inspection of certain GRILLON products following the detection of ropes mounted incorrectly in the rope adjuster of recently produced GRILLON products. In such a case, the product does not perform its blocking function, which can result in a risk of injury. Please immediately stop sales and use of GRILLON products manufactured between October and December 2023, and follow the inspection procedure described below.

4 JANUAR 2024 LAUFENDE AKTIONEN

Last update : 4th January 2024



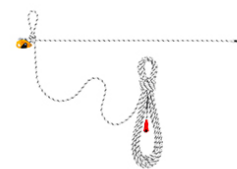
GRILLON

GRILLON HOOK
European versionGRILLON HOOK
international version

GRILLON MGO



GRILLON anchor



GRILLON lifeline

How do I know if I need to inspect my product?

1) Identify your product marking.

Depending on the product, it may be marked on the plastic sleeve of the free strand or on the rope label.



Suchen

If your product has a “label marking”, it is not in the scope of this request for inspection.

If your product has a “plastic sleeve marking”, proceed to the next step.

2) Check the manufacturing date of your product.



Your product was manufactured before October 2023 or after December 2023: your product is out of the scope of this request for inspection.

Your product was manufactured in October, November or December 2023 :

1. Use the Excel tool below to find out if your product or box of products needs to be inspected:

[Download Excel file](#)

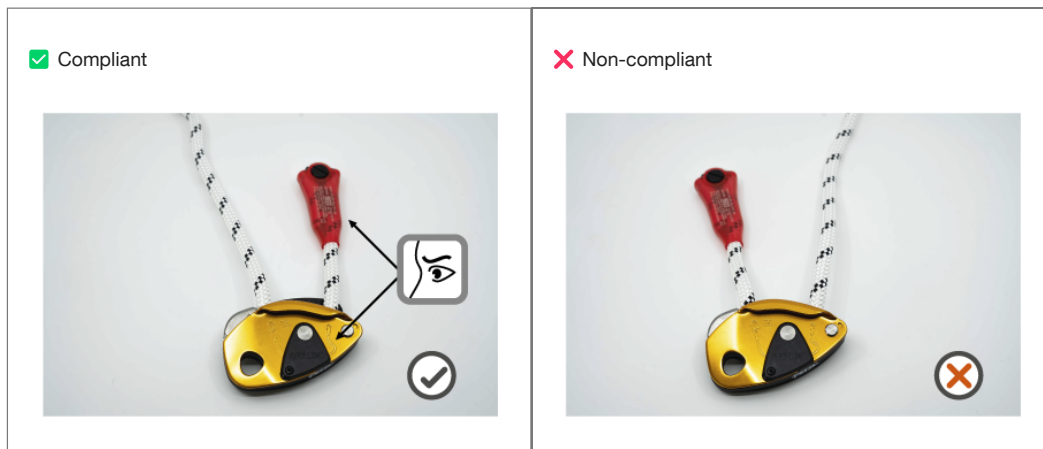
The list of batches to be inspected is also available in the file below:

[Download pdf file](#)

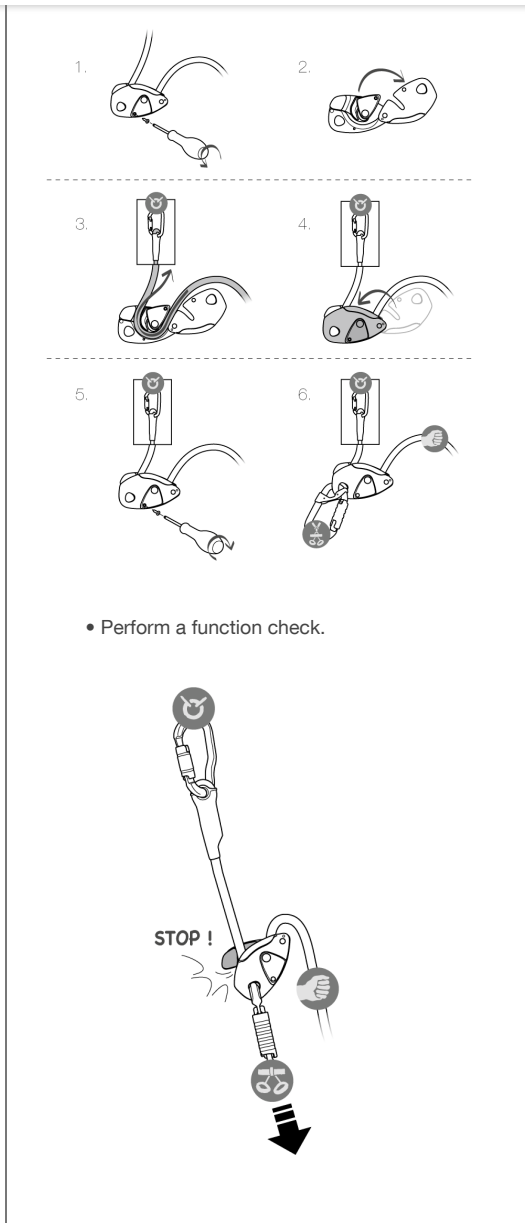
2. If your product needs to be inspected, carry out the inspection described below.

What visual inspection should be carried out?

The rope installation direction is indicated by the markings on the moving side plate:



Suchen





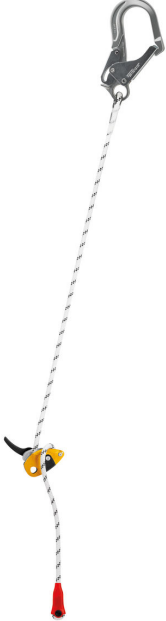

If you have any questions or doubts, contact your local Petzl after-sales service [via the contact form](#).

FAQ

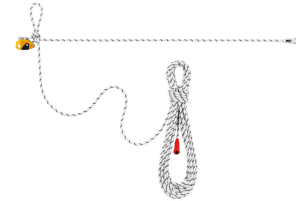
Which references are concerned by this request for inspection?

Product	Photo	References
GRILLON Adjustable lanyard for work positioning		L052AA00 L052AA01 L052AA02 L052AA03 L052AA04 L052AA05 L052AA06 L052AA07

Suchen

Product	Photo	References
<p>GRILLON HOOK Adjustable work positioning lanyard with HOOK connector - European version</p>		<p>L052BA00 L052BA01</p>
<p>GRILLON HOOK Adjustable work positioning lanyard with HOOK connector - International version</p>		<p>L052CA00 L052CA02 L052CA03</p>
<p>GRILLON MGO Adjustable work positioning lanyard with MGO connector</p>		<p>L052DA00</p>
<p>GRILLON Quick adjustment anchor</p>		<p>L052AA00 L052AA01 L052AA02 L052AA03</p>

Suchen

Product	Photo	References
GRILLON Temporary horizontal lifeline		L052AA03 L052AA04 L052AA05 L052AA06

My product is marked on a gray plastic sleeve instead of a red one. Is this normal?

This is a black GRILLON product. In this case, the sleeve is not red but smoked gray. Refer to this marking to identify if your product is in the scope of this request for inspection.

How many products affected have been detected?

As of January 2, 2024, 8 products have been detected, in a single manufacturing batch.

Have there been any injuries with the products affected?

As of January 2, 2024, no injuries have been reported.

I received a GRILLON product with a green sticker on my product bag. What does this mean?

Petzl has inspected GRILLON products concerned by this request and has identified them with a green sticker on the bag.

Newsletter abonnieren

und auf dem Laufenden bleiben

Email*

OK

Tritt der Community bei!



@PETZL_OFFICIAL



PETZL



PETZL
PROFESSIONAL



PETZL SPORT



PETZL



PETZL
PROFESSIONAL



@PETZLRUNNING



PETZL
NIGHT RUNNING

WER WIR SIND

Unsere Marke**Stiftung****Ausbildung**

ANDERE PETZL WEBSEITEN

Betreiber**Intervention**

KONTAKT AUFNEHMEN

Petzl International
international@petzl.com
+33 (0)4 76 92 09 20
[Kontaktformular](#)

Pressezugang[Rechtliche Hinweise](#)

[Richtlinien für die Verarbeitung
personenbezogener Daten und zur
Verwaltung von](#)

[Cookie-Einstellungen](#)

Die dargestellten Aktivitäten sind mit Risiken und Gefahren verbunden. Jeder Anwender muss eine Ausbildung absolviert haben und über entsprechende Kompetenzen in der Benutzung der Ausrüstung bei diesen Aktivitäten verfügen. Petzl Kontakt in Other

© 1995-2024 Petzl